



Fred is a water resources engineer who looks forward to *WireTap* every Tuesday.



Debbi is a project manager who tunes in to *Weekday* regularly.



Dee is a retiree who plans his adventures while listening to *Travel with Rick Steves*.



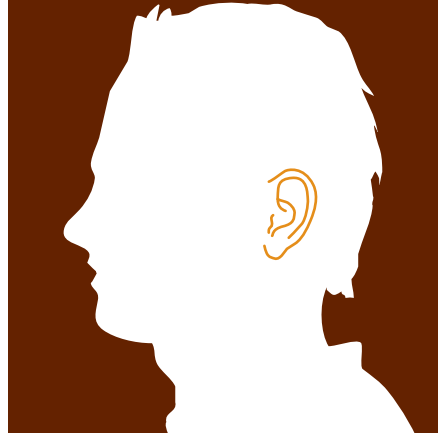
Wendy is a creative director who listens to KUOW's *The Conversation* during her lunch breaks.



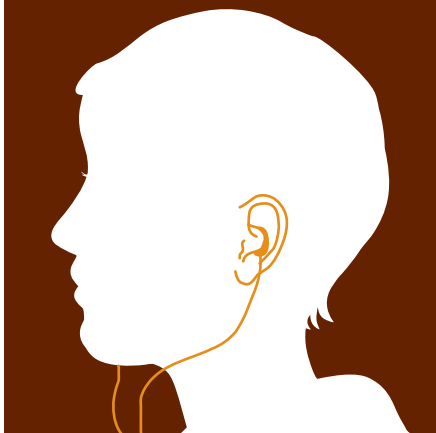
Todd is a web developer who enjoys *The Splendid Table* and *This American Life* on the weekends.



Andy is a kickboxing coach who tests his word skills every week when listening to *Says You!*



Lynn is a small business owner who is crazy about *The Vinyl Café*.



Shuo is a designer who loves listening to the diverse topics covered on *Speakers' Forum*.



KUOW
94.9

kuow.org

**PUGET SOUND
PUBLIC RADIO**

**2009 REPORT TO
CONTRIBUTORS**

Julia is a mom who plans her Saturdays around *The Swing Years and Beyond*.



Diane is a PR expert whose Saturday mornings always include *CarTalk*.



Erica is a teacher who listens to *Wait Wait...Don't Tell Me!*



KUOW'S MISSION IS TO CREATE A MORE INFORMED PUBLIC, ONE CHALLENGED AND INVIGORATED BY A DEEPER UNDERSTANDING AND APPRECIATION OF EVENTS, IDEAS AND CULTURES.



PRESIDENT + CEO

The global economic downturn and its impact on our lives and communities dominated the news this year. Hundreds of hours of local, regional, national and international economic features were aired on KUOW. Some of the most comprehensive reporting was heard on *Marketplace* morning and evening reports, and on *Planet Money*, a new collaboration between *This American Life* and NPR News. Public radio is known for in-depth, fact-based news and its coverage of the crisis attracted many new listeners. At a time when news and information seekers are increasingly fragmented, the KUOW audience continues to grow.

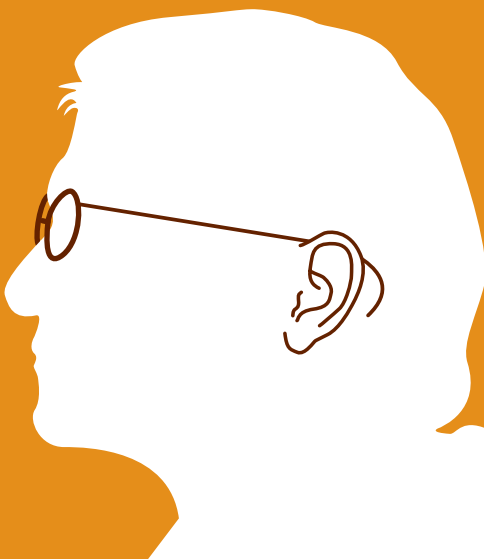
The economic disruption affected KUOW as well. The stock market's steepest decline took place during the fall pledge drive. Thanks to you, however, both fall and spring drive goals were met. Many donors increased their contribution over prior years and commented that KUOW's service was more valuable than ever. Listener support was at an all-time high in fiscal year 2009. However, underwriting support, from businesses and non-profit organizations, was down and may take some time to recover. KUOW entered fiscal year 2010 with a solid financial footing. We anticipate no reduction of the broadcast and online program services you count on.

The fate of professional journalism is of considerable interest as many newspapers reduce newsroom staff and provide content on digital delivery channels. Although not a new topic of discussion, it was spurred locally by the closure of the *Seattle Post-Intelligencer (P.I.)*. Some opinion leaders cite non-profit public radio news as a model for all professional journalism. KUOW, KPLU and KCTS Channel 9, together with former *P.I.* journalists and other interested parties, are exploring possible collaborations designed to sustain local news.

While committed to the long-term viability of broadcast radio, National Public Radio is investing considerable resources in new digital platforms as a strategy to deliver more public service to more Americans. NPR's Website, NPR.org has become a new national newspaper. The digital expansion is championed by new leadership at NPR. President Vivian Schiller and Vice President Kinsey Wilson came to public radio from the *New York Times* and *USA Today* respectively.

From all of us at KUOW, many thanks for your ongoing support of professional journalism!

Wayne C. Roth
KUOW Puget Sound Public Radio
President and CEO



KUOW PUGET SOUND PUBLIC RADIO BOARD OF DIRECTORS

Frank Woodruff
Chair

Allan Steinman
Vice Chair

Judith Endejan
Secretary

Jon Eastlake
Treasurer

Norm Arkans—Ex officio
Katharine Barrett
Christine Deavel
Nelson Dong
Stephanie Ellis-Smith
Joan Enticknap
Arif Gursel
Chris Higashi
Linda Kennedy

Dennis Kenny
Maryfrances Lignana
Jennifer O'Connor
Scott Poepping
Susan Ward Potts
Wayne Roth—Ex officio
Veronica Smith
David Valdez

*Thank you to our friends
Lee Daneker, Robert
Flennaugh II, Alden Garrett,
Steven Gilbert, Jany Jacob,
and Pauline Reiter (Past
President) who concluded
their service as KUOW
Puget Sound Public Radio
board members in 2008.*



BOARD CHAIR

KUOW serves as a strong, reliable resource for news and is one of the most listened to stations in the Puget Sound region. Despite the economic climate over the past year we continued to invest in many additional services: adding reporter positions, locally debuting Public Insight Journalism, upgrading the KUOW archives and more. All of this was made possible through the support of our listeners. We appreciate the generosity of our local community, especially during a year of unique financial challenges.

At KUOW, annual contributions from listeners and underwriting support from local businesses and non-profits have always been our two largest sources of revenue. In the past many listeners have expressed an interest in providing a more permanent form of sustained support to the station. In order to provide a vehicle for gifts of this sort, KUOW recently established an endowment fund—designed to provide support for the station in perpetuity—that can accept either lifetime gifts or bequests. For someone interested in making a transformational gift to the station, it may also be possible to establish a named endowment tailored to the desires of the donor. As endowment assets grow, they will enhance KUOW's ability to produce the type of programs our listeners so greatly value.

Increasing access to KUOW's services remains a priority, and the station is employing a variety of methods to provide more public radio to more people. KUOW's second service, which we call KUOW2, offers an additional 24 hours of news and information each day—shows such as *Fresh Air* and *Talk of the Nation*, as well as a wide range of programming from around the world. If you have a high definition (HD Radio™) radio, you can listen to KUOW2 at 94.9 FM. You can also hear KUOW2 as an audio stream at KUOW2.org.

HD radio broadcasts a digital signal of near-CD quality. And unlike satellite radio, HD radio is available without a monthly subscription fee. When HD service debuted a little more than five years ago, consumers were slow to embrace the technology. This was due as much to a lack of awareness as to the high cost of HD radios. Today, there are more than 100 HD radio receivers to choose from and portable players are available for less than fifty dollars. HD radios are standard on a number of imported cars, and they are optional equipment on many domestic automobiles. You can find more information about HD radio at KUOW.org as well as at hdradio.com.

Thank you for listening to and supporting KUOW. Because of you, the station remains on a solid foundation. We look forward to serving you in 2010 and beyond.

Frank Woodruff
KUOW Puget Sound Public Radio
Board Chair



BEHIND THE SHOW

KUOW produces over 30 hours of local programming each week. KUOW producers and hosts spend their day looking for show ideas, conducting background research and booking guests. Sources for show topics include articles, pitches from media representatives and plenty of research conducted by phone and email. With live programs like *Weekday* and *The Conversation*, producers can work right up until air time booking a guest or confirming facts.

LOCAL PROGRAMS

WEEKDAY

Senior Host: Steve Scher

Talk Show Producers: Katy Sewall and Sage Van Wing

Weekday is KUOW's daily signature public affairs program; a program where every topic is on the table. Monday through Friday, *Weekday* engages the curious and encourages an understanding of local and national issues. *Weekday's* coverage of the political arenas—local, regional and national—and interviews with leaders such as presidential candidates Senators Barack Obama and John McCain* prompted listeners to ask and act. *Weekday* also brought the variety and complexity of the world to our region with continued coverage and discussion of the wars in Iraq and Afghanistan, and by revealing the issues facing veterans returning home. Interviews with regular and returning guests King County Executive Ron Sims, Governor Chris Gregoire and Seattle Mayor Greg Nickels enabled listeners to develop their opinions on policies, and helped shape how they participated in the political process. Last year, *Weekday* provided in-depth, ongoing coverage of the local and national political campaigns, the economic crisis, the healthcare debate and green technology.

THE CONVERSATION

Senior Host: Ross Reynolds

Talk Show Producer: David Hyde

Producer: Jenny Asarnow

The Conversation, KUOW's daily call-in talk show, continued to provide listeners with a forum for lively public debate and thoughtful discourse. This year the program moved to a magazine format which gave listeners a wider coverage of a greater number of issues and events. In-depth political coverage focused on the presidential race between Senators John McCain and Barack Obama, and featured interviews with candidates including Dave Reichert and Darcy Burner in the battle for the 8th Congressional District. Philosopher Peter Singer and other guests spoke about solving poverty. New York University media guru Jay Rosen, *On the Media's* Bob Garfield, *Wired* magazine's Chris Anderson and other guests spoke about the future of the news business following the demise of the *Seattle Post-Intelligencer*.

KUOW PRESENTS

Managing Editor: Megan Sukys

Producers: Elizabeth Austen, Dave Beck, Jeremy Richards, Sarah Waller, Jeannie Yandel

KUOW Presents is a continuation of the local radio innovation that began with the forerunner to this program, *Sound Focus*. This past year, producers reached into communities throughout the Northwest to find stories that reflect the diversity, creativity and passion of this region. As a result listeners heard chronicles that were surprising, engaging and enduring. Stories introduced listeners to the primal athleticism of the urban sport called Parkour and a WWII veteran who had recently returned a kamikaze flag to Japan. Listeners traveled to the one-square-inch of silence in the Hoh Rain Forest and then to the deep recesses of Seattle's Municipal Archives where a single slip of paper changed lives. Regular interviews with music, art, poetry, entertainment, food and literary commentators kept listeners in touch with a multitude of enriching local experiences. Portions of *KUOW Presents* are archived at KUOW.org.

SPEAKERS' FORUM

Producer: Sara Lerner

The Puget Sound region is a favorite destination for prominent academic, literary and political figures. KUOW's *Speakers' Forum* broadcasts lectures and discussions recorded throughout the region from these luminaries. This year speakers included astrophysicist and popular *NOVA scienceNOW* host, Neil deGrasse Tyson and journalist and scholar Michael Pollan. Author and frequent public radio contributor David Sedaris shared his struggles to quit smoking while living in Tokyo, and *New York Times* columnist and Nobel laureate Paul Krugman spoke of his views on the state of the economy. Julia Child Award winner Betty Fussell told the story of beef cattle in the U.S. from the days of early settlers and cow towns to the industrial feedlots and wood-paneled steakhouses of today. *Speakers' Forum* programs are archived at KUOW.org.

"KUOW provides about 90 percent of my political and cultural information including music, art, theater and events. KUOW allows me to make informed voting decisions and to discuss candidates and issues. We are all so busy with our commitments, yet listening to KUOW through the day enables me to stay in touch and informed about Seattle, King County and the world. Instead of TV, I look forward to *Wiretap*, *This American Life* and *LA Theater Works* for entertainment. Thank you all!"

—Peter



KUOW NEWSROOM

KUOW reporters bring you local and regional news reports daily, and special features throughout the year. You'll also hear stories from KUOW reporters on national programs, including *Morning Edition* and *Marketplace*.

A typical day for a KUOW reporter includes reading articles and checking wire services before attending a morning editorial meeting. Reporters then spend the day conducting interviews and writing their stories. In addition to daily stories, KUOW reporters work on feature stories, which can take several days or weeks to complete.

KUOW NEWS

THE SWING YEARS AND BEYOND

Host: Amanda Wilde

Featuring popular music of the 1920s to the 1950s, *The Swing Years and Beyond* is KUOW's longest running program and an audience favorite. For over 44 years listeners have spent their Saturday nights listening to familiar favorites and discovering lesser known gems from a mix of jazz, swing, show tunes and blues. This year, *The Swing Years* featured a special interview "Swing Baby, Swing: Norma Miller." Miller, who grew up in the streets of Harlem in the 1930s, spoke about her life as a dancer, choreographer, comedienne, author and songwriter. In a regular monthly segment on *Sound Focus* and *KUOW Presents*, Wilde provided the unknown history behind commonly known songs in *Sounds Familiar*. Playlists can be found at KUOW.org/swing_years.php.

KUOW PUGET SOUND PUBLIC RADIO NEWS

News Director: Guy Nelson

Senior Editor: Jim Gates

KUOW's newsroom continued to distinguish itself in the quality and depth of its news and feature reporting—covering the most important local and national stories affecting our region. Reporters Ruby de Luna, Phyllis Fletcher, Liz Jones, Amy Radil, John Ryan, Marcie Sillman and Deborah Wang, and announcer/reporters Jamala Henderson, Patricia Murphy and Derek Wang spend each day researching, conducting interviews, writing and producing their reports. Last year's reports included: "Where Do Republicans Go from Here?"; a look at the future of the Republican party in Washington State; "Undocumented Workers"; their movement to Vancouver, Canada; "School Closures"; children share their apprehensions of leaving their schools; and "Minority Mortgages," a look at how some in these groups have fared in a downturn market.

In addition to daily reporting, KUOW news staff also work on feature stories and series which can take several days or weeks to complete. Last year, features included: "Seattle Post-Intelligencer: Turning the Page"; a review of the 146 year history of the paper and the people behind the institution; "Sweet Earth: Lessons from the Land"; a look at the growing movement to eat locally; and "The State of Execution," a three-part series examining the death penalty in Washington State.

NORTHWEST NEWS NETWORK (N3)

In FY09, the Northwest News Network (N3) entered into its fifth year and continued to be a model of collaboration and producer of award-winning** news reports. N3 is supported financially by KUOW and eight other public broadcast organizations operating a total of 61 stations throughout Idaho, Oregon and Washington. Coverage throughout the Northwest is provided by N3's statehouse bureaus in Olympia, WA, and Salem, OR, news bureaus in the Tri-Cities and Coeur d' Alene, ID, and a roving correspondent. As a public radio cooperative, N3 not only provides stations with content, but allows partner stations to share their work within the region. This year, editors Cathy Duchamp and Colin Fogarty; and correspondents Tom Banse, Austin Jenkins, Anna King, Chris Lehman and Doug Nadvornick produced a significant number of news reports and features from the regional front, allowing partner stations to focus on events and activities within their local communities. This year reports from N3 bureaus provided expanded public service to over 1.4 million*** listeners each week.

THE PUBLIC INSIGHT NETWORK

Public Insight Journalism Analyst: Carolyn Adolph

We've often heard about the increasing role the public is playing in journalism today. This year KUOW began a partnership with Minnesota Public Radio to bring their Public Insight Network (PIN) to our region. The PIN is a network of people—individuals who have experience and expertise that can add insight and substance to KUOW's news and program coverage. In this first year, over 700 people from all walks of life, from every part of the region, and from many fields of expertise joined the PIN to share their knowledge. By connecting KUOW reporters and producers with PIN members, KUOW is able to find fresh insights and perspectives, discover new stories that have not been reported and find people who can help tell the stories we are following. PIN information is online at kuow.org/publicinsight/.

"Listening to KUOW makes me smart. Or...at least makes me feel smart...and that's a good thing! Thank you KUOW!"

—Anita

* 1999 McCain interview and 2006 Obama interview were rebroadcasted in August 2008.

** See "2008-2009 Awards" section of this report.

*** Arbitron Sp, F '08.

KUOW PROGRAM VENTURE FUND

The Puget Sound Region: In depth and in focus. The KUOW Program Venture Fund (PVF) provides special support for staff and independent producers to develop new programming focused on the Puget Sound region. The PVF accepts project proposals from producers and reporters three times per year. Since its inception the PVF has funded over 20 projects which have been feature reports, documentaries or short audio pieces. The KUOW Program Venture Fund was initiated in 2003 by a key gift from Paul and Laurie Ahern, long-time friends to KUOW.

KUOW'S SECOND SERVICE—KUOW2

KUOW's second service, KUOW2 is a compliment to programming heard on KUOW 94.9 FM, and continued to provide expanded program options for greater Tacoma, the South Sound, HD Radio™ and online listeners. National favorites such as *The Diane Rehm Show*, *Talk of the Nation* and *Science Friday* broadcast live and allowed listeners in the Puget Sound region to participate in national discussions on issues of the day. KUOW2's schedule of comprehensive international news provided insight and a diversity of viewpoints on events happening throughout the world such as conflicts in Africa and the Middle East and the global recession and recovery efforts. International politics and human interest stories helped expand an understanding of people and their cultures. Nearly all of KUOW2's international programming is exclusive to listeners in the region such as: News from the Canadian Broadcasting Corporation, Asia Pacific (Radio Australia) and World Radio Network (reports from broadcasters in Russia, The Czech Republic, Korea, Romania, Africa, Sweden, the Netherlands and China).

KUOW2 is heard at KUOW 94.9 HD as HD Channel 2 and online as a live stream at KUOW2.org. Listeners in Tacoma and the South Sound can hear KUOW2 at 91.7 FM.

THE WEEKDAY HIGH SCHOOL INTERNSHIP PROGRAM

Managing Editor: Nathan Friend

Weekday High is KUOW's summer high school internship program. Since its inception in 2004, over 30 students have spent a part of their summer in the KUOW studios learning the fundamentals of public radio. In the 2008 session, six high school students participated in hands-on workshops for interviewing, recording, voicing and editing. Interns produced their own radio stories based on the theme of the 2008 session: activism. The culmination of their work was the podcasts they hosted and produced which were aired on *Weekday* and were highlighted on KUOW.org. An audio archive of the work done by Weekday High interns can be found at: kuow.org/weekdayhigh.

KUOW.ORG + KUOW2.ORG

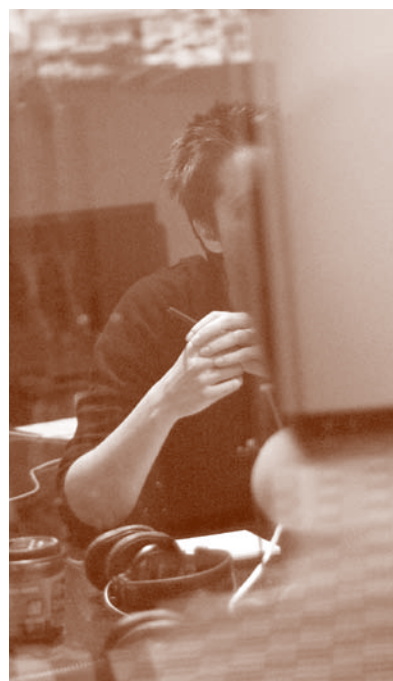
Director, Online Services: Jenna Montgomery

Web Producers: Morgen Nilsson and Carmen Santos

In FY09, KUOW.org averaged 159,660 unique visits and 322,750 page views each month, and over 2,500 news stories and programs were added to KUOW's rich online audio archives. Multi-media support was provided for news specials such as *Old Masters*, *Our Time: Teens and Politics*, and *Seattle Post-Intelligencer: Turning the Page*. Two new innovative tools were launched: the Public Insight Network (PIN) and the Public Radio Player. The PIN invites individuals in the community to share their expertise for reporter research. The Public Radio Player is an application that streams KUOW and lists its schedule on the iPhone and iPod touch™ mobile devices. Newly revamped RSS feeds promote shows ahead of broadcast and enable users to subscribe to feeds via email. KUOW.org and KUOW's second service KUOW2.org provide online streaming of 94.9 FM and 91.7 FM broadcasts, archived audio, podcasts, program information and schedule, and online pledging. Continued support in FY09 from the Otto Haas Charitable Trust enabled KUOW to enrich the content and program support of KUOW.org.

PUBLIC SERVICE

An important KUOW goal is to expand public service through listener growth, significant local programming and the use of multiple channels. KUOW continues to invest in providing more quality public radio programming to more listeners in our region in a multitude of ways.





ACQUIRED SHOWS

In FY09, KUOW invested approximately one third of the organization's annual programming budget into acquiring high quality public radio programming from national and international producers and distributors. KUOW continued to be the exclusive provider of the majority of national and international public radio programs available to listeners in our region. On KUOW 94.9 FM, over 30 hours of locally produced content was coupled with a variety of acquired programming to provide thousands of hours of news, information and cultural programming to the Puget Sound region. This programming also provided KUOW listeners with special coverage of important events such as the 2008 national elections, the continuing wars in Iraq and Afghanistan, the global economic crisis and the national housing market collapse. KUOW continued its affiliation with National Public Radio (NPR), producer of two KUOW anchor programs, *Morning Edition* and *All Things Considered*, as well as popular weekend programs, *Wait Wait...Don't Tell Me!* and *Car Talk*. Distributor Public Radio International (PRI) contributed to the schedule with *To the Point*, *The World* and *This American Life*, as did American Public Media (APM) with *Marketplace* and *A Prairie Home Companion*. Additionally, KUOW featured programming and news broadcasts from the renowned British Broadcasting Corporation (BBC).

2008-2009 AWARDS

PRNDI (PUBLIC RADIO NEWS DIRECTORS INCORPORATED)

Spot News: 2nd Place, Sara Lerner, KUOW

"No More Lemon Bars for Voters," marked the end of the in-person voting experience in Washington State.

RTNDA REGIONAL EDWARD R. MURROW AWARDS

(REGION 1, RADIO: LARGE MARKET)

News Documentary: 1st Place, Liz Jones, KUOW

"A Village Away from Home," traced the migration trend from the Mexican sierra to Seattle's fast-paced suburbs. *This series was funded through the KUOW Program Venture Fund.*

News Series: 1st Place, Patricia Murphy, KUOW

"The State of Execution," examined the death penalty in Washington State.

NW REGIONAL SPJ AWARDS (SOCIETY FOR PROFESSIONAL JOURNALISTS)

General News: 1st Place, Austin Jenkins, N3

"In Washington, Mentally Ill Children Face Long Wait"

Feature News: 3rd Place, Tom Banse, N3

"Vet Finds New Mission Painting Portraits of the Fallen"

Sports: 1st Place, Chris Lehman, N3

"Families Host Minor League Players"

"Just like my coffee in the morning, KUOW is something I need to start the day off right. Thanks for the continued great programming and coverage of issues that matter. Cheers."

—George

FISCAL YEAR 2009

KUOW is fortunate to broadcast in one of the most active public radio listening regions in the country: Seattle, the Puget Sound region and Western Washington. In FY09, KUOW served an average of 373,000 listeners* each week. These listeners averaged 7.6 hours* of listening per week and accounted for the station's more than 2.8 million total weekly listener hours* last year. KUOW maintained a market share of 5.8%* of the regional radio audience, ranking second among local stations in the Seattle Metro market*. KUOW's consistently high rankings in the Seattle Metro Market is a reflection of KUOW's relationship with the community it serves and the station's commitment to providing quality public radio programming.

REVENUE

Total direct support to KUOW for fiscal year 2009 (FY09) was **\$10,049,871***.

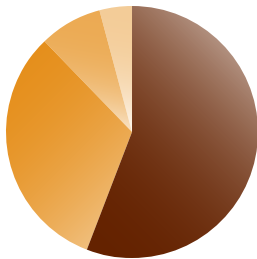
Individual Support: Revenue from individuals in support of KUOW's broadcast service in FY09 totaled \$5,051,523. Individual support is the single largest source of revenue to the station's operating budget.

Business Support: The business community and non-profit organizations continued their generous support of KUOW programming this year, with contributions totaling \$3,941,669* in underwriting support.

Institutional Support: The Corporation for Public Broadcasting (CPB) and the University of Washington provided \$732,448 in operating support.

Other Support: Additional support for KUOW comes from grant awards from foundations and corporate giving programs, as well as facility rentals and investment interest. In FY09, support to KUOW from these entities totaled \$324,231.

SOURCES OF APPLIED REVENUE FY09



- 56% INDIVIDUAL SUPPORT
- 32% BUSINESS SUPPORT
- 8% INSTITUTIONAL SUPPORT
- 4% OTHER SUPPORT

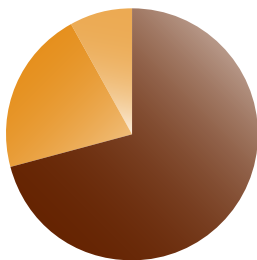
Individual Support	\$5,051,523
Business Support	2,952,540
Institutional Support	732,448
Other Support	324,231
TOTAL	\$.9,060,742

EXPENSES

Total direct operating expenses were **\$9,060,742****.

Program-related expenditures totaled \$6,403,891 or 71% of all direct expenses in FY09 and continues to be the largest single expenditure KUOW makes each year. Fundraising and administrative expenses remained consistent with FY08 at 21% or \$1,965,898, and \$690,953 or 8% respectively.

DIRECT EXPENSES FY08

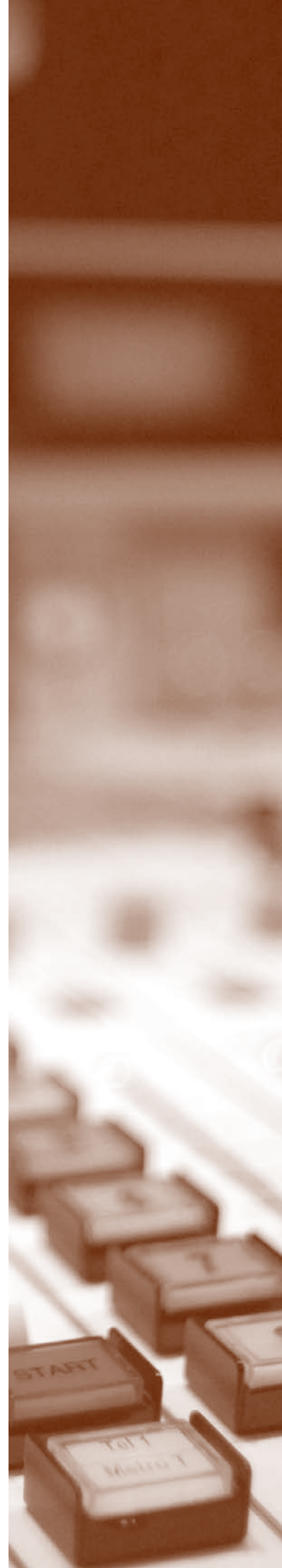


- 71% PROGRAMMING AND RELATED SERVICES
- 21% FUNDRAISING
- 8% GENERAL AND ADMINISTRATION

Programming and Related Services	\$6,403,891
Fundraising	1,965,898
General and Administration	690,953
TOTAL	\$.9,060,742

* Source: Arbitron© SuFa08 and W09, Listeners 12+ M-Su 6A-12M,TSA.)

** Excludes indirect and in-kind.



EVENTS IN THE COMMUNITY

KUOW is proud to support nonprofit organizations and events in our broadcast region. We sponsor events that reflect the mission of KUOW's programming and events we believe our listeners would enjoy.

For more information about sponsored events, please visit kuow.org/inthecommunity.php.

KUOW + COMMUNITY

In fiscal year 2009, KUOW proudly provided media-sponsorships to 142 community events, festivals, exhibitions, dance, music, performances, lectures, forums and other gatherings. Seventy five non-profit organizations from throughout the Puget Sound region were represented. A KUOW media-sponsorship provided these organizations the opportunity to highlight their activities to KUOW listeners. Sponsorships included on-air announcements, a presence on the "In the Community" page on KUOW.org and mentions in printed materials. A key component of KUOW's mission is to expose our community to diverse, thought-provoking ideas, people and experiences. Providing these sponsorships to a wide assortment of cultural, artistic and community events is just one of the ways KUOW endeavors to satisfy its mission.

A Contemporary Theatre's Central Heating Lab	Henry Art Gallery	Seattle Public Theatre
AJC Seattle Jewish Film Festival	Indigenous Studies Foundation/The Honor Foundation	Seattle Repertory Theatre
Arts Corps	IslandWood	Seattle Shakespeare Company
ArtsWest	Jack Straw Productions	Seattle Symphony
Auburn Symphony Orchestra	Kirkland Performance Center	Seattle Tilth
Ballet Northwest	Mayor's Office of Arts and Cultural Affairs	Seattle Youth Symphony Orchestras
Bellevue Arts Museum	Museum of History & Industry	SEEDArts
Bellevue Chamber Chorus	National Geographic Live! Benaroya Hall	SIFF Cinema
Book-It Repertory Theatre	Nature Consortium	Tacoma Philharmonic
Broadway Center for the Performing Arts	Nordic Heritage Museum	The Talented Youth
Bumbershoot	Northwest Film Forum	Three Dollar Bill Cinema
Burien Arts Association	Northwest Folklife Festival	Town Hall Seattle
Burien Little Theatre	Northwest Girlchoir	UW World Series
Burke Museum of Natural History and Culture	On the Boards	Washington Center for the Book at Seattle Public Library
Camlann Medieval Association	Pacific Science Center	Washington State History Museum
CD Forum	Peace Action of Washington Education	Wing Luke Asian Museum
Center for Wooden Boats	Phinney Neighborhood Association	Wing-It Productions
Chamber Dance Company	Port Townsend Film Institute	World Affairs Council
Chinese Arts and Music Association	Renton Civic Theatre	
CityClub	Richard Hugo House	
Copper Canyon Press	Seattle Art Museum	
Cornish College of the Arts	Seattle Arts & Lectures	
EMP SFM	Seattle Center Festal 2009	
Federal Way Symphony	Seattle Children's Theatre	
Frye Art Museum	Seattle Gilbert & Sullivan Society	
Giant Magnet	Seattle International Film Festival	
Graduate School of the UW	Seattle Opera	
GreenStage		
Harlequin Productions		



"I love NPR! I work at home and listen all day long, sometimes. Thank you for the great reporting, on international, national, and local issues. We are happy to support such a great service!"

—Amy



**KUOW PUGET SOUND
PUBLIC RADIO** is a
501 (c)(3) non-profit
organization and is
listener-supported. KUOW
provides local, national
and international news and
information programming
to listeners throughout the
Puget Sound region.
KUOW-FM is licensed to the
University of Washington.

THANK YOU

Because of your support, KUOW has served the Puget Sound for 57 years.

KUOW CONTRIBUTORS FY09

INDIVIDUAL SUPPORT

We gratefully acknowledge the following listeners for their generous support of KUOW public radio.

*Denotes KUOW Puget Sound Public Radio Board Member

\$1,000+

A

Anonymous (14)
David and Sheila Aas
Don and Jane Abel
Carol Achtmeyer
Peter Ackroyd and Joan Alworth
Richard Adamson
William and Janette Adamucci
Paul and Laurie Ahern
Khaja and Asma Ahmed
Ed and Charlotte Alkire
Ellsworth and Nancy Alvord
Kathryn Alvord Gerlich
Dane Anderson
Brian Arbogast and Valerie Tarico
Samia Ashraf and Lewis Davidson
Robert and Patricia Atkinson
Merritt and John Atwood
Jay Aydelotte
Rosa Ayer
Tammy Ayyoub

B

Lawrence and Mary Ann Bailey
Gordon and Jason Baker
Richard and Randi Baldwin
Connie and Steve Ballmer
Gail Bankovich and Eric Barkan
Darlene Barr and Anne Croghan
Peter and Jane Barrett
Phillip and Tiia-Mai Barrett
Aloise Bates and Mark Early
Ward Beattie and Keeman Wong
Allison Beezer and Mary Kudla
John and Charlotte Behnke
Brian Berkowitz
and Laurel Johnson
Richard and Thelma Berner
Carol and Brian Bershad
Jeanne Berwick and James Degel
Joann and Carl Bianco
Dick and Susan Birkenbuel
Fraser and Deirdre Black
Wendy Blight and Tara Barber
Jabez Blumenthal and Julie Edsforth
Dee Boersma
Janet Boguch and Kelby Fletcher
Paul and Debbi Brainerd
Jonathan and Bobbe Bridge
James Bromley and Joan Hsiao
Stephanie and Rick Brooks
Clarence Brown
Caroline and David Browne
Jay and Diana Broze
Marilyn and William Bumpas
Tim Burner and Camille Gearhart
Pamela Burns McCabe
Frank Buxton and Cynthia Sears

C

Christopher Capossela
Trina and Christian Carlson

Toni Carmichael, FarWorks, Inc.
Paul and Senmi Carter
Robert Casey
Frank and Denise Catalano
Brian and Nancy Cedar
James and Janet Chalupnik
Sanjoy and Suparna Chatterji
Eiise Beth Chayet
Martin and Linda Cheever
Claus Christensen and
Annette Wilson
Gary and Grace Christophersen
Cathe Clapp and Denis Keyes
Margaret Clapp
Joseph Clark and Asuman Kiyak
Robin Lee Clarke
Therese Coad and
Christopher Pence
Theodore and Patricia Collins
Sherie and David Coons
David and Linda Cornfield
David Cosman and Sarah Soutter
Fred Cox
Catherine Crawford
Curtis Creamer
Simon Crosby
Judy Curley
Pete and Pat Curran
Lois Curtis

D

James Davie
Leann Dawson and Arthur Fleming
Mark and Christina Dawson
Jean De Fond
Ralph and Karen Derrickson
Brian Dewey and Eileen Brown
Joseph and Ellen Dial
Idalice Dickinson
Nancy Dorn
Fred Drennan and Teresa Massagli
Matt Dressler and
Mary Ellen Cunningham
Michael Dryfoos and Ilga Jansons
Vasiliki Dwyer

E

Carolyn and Chris Eagan
Amanda Ebbert
Kris Edwards
Jennifer Ellestad
Janey Elliott
Barbara and John Ellis
Stephanie Ellis-Smith* and
Douglas Smith
Mark and
Meredith England-Markun
Anne Ensminger
Joan Enticknap*
Douglas Erickson
Lowell and Nancy Ericsson

F

Laurie Fan
Darlene Feikema
Bradley Feilberg
Stephen and Kathy Feldman
Sara and Andrew Fenzl
Carol Finn
Bill Fleckenstein
Jack and Beth Fleming
David Frazzini and
Piedad Martinez
Paul and Penelope Fredlund
Beth Frey
Deborah and David Friend
Ed Fries

Karen Fries and Richard Tait
Robert Fries and Debra Dahlen
Ken and Teresa Frost

G

Michale Gabriel
Laura and Grant Gardner
Alden Garrett and Charlie Eriksen
Gretchen Garth
Bill Gates Sr. and
Mimi Gardner Gates
Julie Gerrard
Benjamin Gibbard
Deborah Giles and Charles Simrell
Dagmar Glier and
Dagmar Movasagi
Maryanne Godfrey and
Christopher Noell
Shannon and Bill Gordon
Robert and Kathleen Greco
Daniel Greenawalt
Marcia Greenberg
Gerald and Lyn Grinstein

H

Duncan and Birgit Haas
Lucy Hadac
Charles and Lenore Hale
Steven and Jeannie Hale
Linda Hall and Charles Grant
M. Elizabeth Halloran
Spencer Hamlin
Lenore Hanauer
Kristi Hannigan and Robert Hood
James and Diana Hanson
Susan Harmon and Richie Meyer
Larry Harris and Betty Azar
Andrea Harrison
Kristina Hart and William Harder
Mary Beth Hasselquist
Stephen and Sarah Hauschka
Eric Hawley and Gwen Lowery
Elizabeth Hebert
Richard and Betty Hedreen
Linda Hedstrom and
Richard Steffel
Lucy Helm
Fred Herzberg and Jeanne Large
Steven and Sandra Hill
David Hiscock
Suzanne Hittman
Patti and Stuart Hobbs
Jonathan Hoekstra and
Jennifer Steele
Carol and Tom Hogan
Kathy and Michael Holmgren
Mark Houtchens and Pat Hackett
Linda Hume
John and Barbara Huston

J

Mari Jalbing and James Robart
Jeffrey James
Keith and Carol James
Gretchen and Erik Jansen
Mark and Laura Jennings
Gregory Johnson and
Tanya Bednarski
Lewis and Sonia Johnson
Linda and Ted Johnson
Mark and Jeanne Johnson
Don Jones Production
William Jones and
Maria Jones Staaf

K

Diane Kallas
Raj Kapur and Jennifer Fangman

Helen Karl M.D.
Betty Keisler
Randall and Laura Kern
Tim Kerr and Cynthia Wells
Martin King
Roger and Norma King
Mike Kittross
Stephen and Eileen Knoff
Johannes Koch and
Debra Somberg
Alan and Marian Kohn
Martha Kongsgaard and
Peter Goldman
Mark Konings and
Paige Chernow
Michael and Cheryl Kopp
David and Frances Korten
Kari Koszdzin and Leo Pallanck
Nicholas and Jan Kovach
Anne Krook

L

Matthew Lambert
Bruce and Emily Langworthy
Christopher and Alida Latham
James Leslie and
Jeanne Tweten
Victoria Leslie
Mark Lewington
Bill Lewis
Steven Lewis and Kathy Leppig
Henry Li
Andrea, Jacob, Julia and
Jamie Lieberman
Maryfrances Lignana*
Kristin Likus and
Jonathan Gross
Greg Lindstrom
Daniel Ling and Lee Obrzut
Annie Livingston
Alexandra Loeb and
Ethan Meginnes
Judith Lonquist and
Judy Zeigler
Matthew and
Gretchen Loschen
Nicholas Lovejoy
Robert Lundeen
Helen Luts

M

Doris Maca
Barry and Lynda MacKichan
Margo MacVicar-Whelan
Steven and Mary Magnuson
Shirley Makela and Brent McElroy
Barbara Maly
Dave Mankoff and Jean Cho
Casey and Jim Margard
Bill and Holly Marklyn
Christina Marra and Paul Silver
Elizabeth Martin
David Matthews and
Ashley Harper
Martha Maurer
Lester McCloskey
Kathleen McCoy and
Philip Vogelzang
Stuart McLean
Colleen and William Meachan
Robin Mendelson
Lisa Mennet and Gabe Newell
Jerry and Lyla Meyer
David Middaugh and
Mary Rae Bruns
Julie and Kyle Miller
Kevin and Michelle Miller

Peter Miller and Jean Johnson
Donald and Pamela Mitchell
Eric and Kim Moen
Nancy Monelli and Roy Mock
Steven and Kathryn Morse
John and Harriett Morton
Lynn and Steve Mowe
Barbara Mullally
Charles and Susan Mullen
Elena Mullin and
Howard Carlson
Janet Murphy
Peter and Tamara Musser
Neal and Amanda Myerson

N

Christopher Nelson
Karen Nelson
Philip Nelson
Donna and James Nichols
Bart Nijssen and Mary Catlin
Douglas and Nancy Norberg
Greg and Jill Norling
David Notkin and Cathy Tuttle
Leo Novakoski

O

Dorothy Oberto
Jennifer O'Connor*
Thomas and Kristin Ogren
John and Kathryn Olsen
Vance O'Neill
Rebecca and Leonard Oorthuys
Heidi Orde and Scott Stender
Glenn Osako and Susan
Baumgaertel
Linda and Barry Owen

P

Constance Parsons and
Sanford Pitler
Janet and Bill Pauli
Travis Penn and John Wicher
Ronald Pessner, Jr.
Jim Peterson
Barbara Petty
Mary Pigott
Daniel Pirone
Eric Polzin and Trudy Rolla
Nicolas Pottier
Bill and Susan Potts*
Rosalyn Powell
Christopher Pratley
Karen Prell
Thomas Pressly
William and Delia Purdy
John Purvis

Q R

Wesley Quigley
Ellen Ratajak
Sarah Read
Pauline and Jack Reiter
Carrie Rhodes
Steven and Fredrica Rice
Paul Rich and Karen Nakagawa
Sherry Richardson and
James Montague
Madge Rieke
Kate Riordan
James and Jo Ann Roberts
Joanne Roberts
Kathleen and Chris Robertson
Valerie and David Robinson
Charles and Janice Rohrmann
Stuart and Lee Rolfe
Charles Rosen
Stanley and Michele Rosen

Wayne Roth* and
Kathleen Alcalá
Abbe Rubin
Gregory Rubin
Linda Ruiz
Elizabeth Ryll and Richard Stead

S

John Sahr and Eliza Sutton
Cathy Sarkowsky
Nancy Schultz
Susan Schulman and Jack
Schenker Charitable Trust
Stephen and Julie Ann Scofield
Morgan and Anne Seeley
Grace Seidel and Ken Harer
Ashvini Sharma
Theresa Shea
Haeryung Shin and
Andrew Von Nordenflycht
Robert Short and Emer Dooley
Rob and Cindy Shurtleff
Kirsten Simonitsch and
Dave Kemp
Donald Sirkin
Jennifer Slack
Karen Sloss
Brian and Laurel Smith
Dorothy and Burton Smith
Warren and Nancy Smith
George and Cherry Snelling
Helen Sommers
Elsie Sorgenfrei
Ricarda Spee
Harold and Gertrude Stack
Pat Stainbrook
Kirk and Janie Starr
Allan Steinman* and
Diane Sigel-Steinman
Robert Steinway
Rick and Anne Steves
Rich and Sharon Stewart
Jerry and Lucy Stimmel
Bob Story and
Ethel McCroskey Story
George Stout
Bernee and Mark Strom
Candice Strudel
John Strunk
Paul Sturm and Flora Ling
Jeffrey Sutherland
Julie, Spencer and
Cooper Sutter
Virginia Sybert M.D.

T

Patricia Tall-Takacs and
Gary Takacs
Margaret Taylor
David and Nancy Thacher
Christopher Thrasher and
Karina O'Malley
Carol Thomas and Mark Wilbert
Mortimer and Joan Thomas
Polly and Jason Thompson
Patricia Thorpe
JoAnne Tompkins and
Jon Schorr
Alejandro and Leslie Torres
Tricia and Steve Trainer
John and Anne Trench

V

Jim Van Der Heyden and
Yvonne Rodriguez
Eleanor Vandenheuval
Aleeta Vanpetten and
Jerome Mueller

Leonard and Julie Vaughn
David and Joyce Veterane
Erik Viafore and Julie Keeler

W

Betty Wagner
Maggie and Douglas Walker
James and Mary Wallace
Todd and Ruth Warren
Kathy Washienko and
Mike Mathieu
Paul Watts and Misty Weaver
Susan Watts
Cynthia Wayburn
Bruce and Leslie Weertman
Alan Weiner and
Nancy Maizels
Adam Weissman
Howard P. and Milagros Welt
Michael Westley and
Patricia Stern
Alan and Julia White
Frank White
Marjorie Whiting
Laura Wideburg and
Asmus Freytag
Monna Wier
Robert and Mary Ann Wiley
Bruce Williams
Chris and Deb Williams
Genevieve Williams
Joshua Williams and
Lakshmi Muirhead
April Williamson
Lucinda Wilson and Lee Acton
Anne and Ken Winkes
Cathy Wissink and Kevin Phaup
Howard and Barbara Wollner
Timothy and Susan Wood
Zelma Wood
Rebecca Woodhouse
Sarah and Lola Woods
Martha Wyckoff and Jerry Tone

Y Z

Judith Yeakel
Nancy York
Vnette Zabriskie
Jason Zander
Shari Zanetti
Terrence Lee Zehrer
Rebecca Zerngast

\$500 - \$999

A

Anonymous (8)
Robert Y. Ackerman
James C. Adams
Marian Alexander and
David Netboy
Rosalie Alhadeff
Janet E. Allison
Sookme Almquist
Jean Amick
Aparna Ananth
Arthur E. Anderson
Carl Anderson
Roger H. Anderson
Judith Andress-Philip
Paul W. Andrews
Beth Andrus and
Mark L. Fleming
Jim R. Angerer and
Mona E. Yurk
Susan and David Anstine
Seth Armstrong

Derek Arndt
John and Sherrie Arndt
Janis Augustin and
Carl Menconi

B

Diane S. Baer
Lydia Bagwell
Ryan Bahrey
Robert and Sally Baird
Harold P. Baldwin
Paul and Donna Balle
Andrea Barbier
Mary Kay Barbi and
Linda Jordan
Richard Barbieri and
Lyn Tangen
Joe Barer and Karyn Barer
Claire Barnett and
Marjorie Mazie
Jillian Barron
Jane W. Barry
Kelly and John Barry
Mary Barstad
Bruce and Nannette Bassett
Deborah and John Batjer
Nicole K. Bavo
Emery Bayley
Paulette Beach
Andrew Begun
David and Mary Beiseigel
Joanna and David Beitel
Edward O. and Pamela Belcher
Mel E. Belding
Carmen and Aaron Bemiller
Julie Bennett
Eric R. and Luann Berman
Christopher M. Bernards
Ann R. Berry
Rachel Bianchi and Tim Hatley
Dylan J. Bigelow
Erika and John Bigelow
Jason Bilanko
Carolyn Bjerke
Shelley L. Bjornstad
Luther F. Black
Peter Bladin and Donna Lou
M. Wayne and Anne Blair
Don and Shawna Bliss
Richard A. Blum
Sandra Bohling
Loui and E. Jay Bond
Margaret W. Bone
Jeff Boutel
J. Ray and Priscilla Bowen
Stephen Boyd
David E. and Debra K. Boyle
Paul and Kate Bradley
Terri Ann Brame and
Dean Brame
Eileen M. Brennan
Heartie Anne Brewer
Thomas and Virginia Brewer
Theresa Britschgi
Jerrold A. Brockmann
Jacquelyn K. Broisma
Anne Browne
Maureen O. Brown
Tom Brubaker
Jeffery Brunson
Fred and Jane Buckner
Leo Butzel and Robbie Reaber

C

Joan Caine and Andre Kahr
Thomas Callahan

William Calvin and Katharine Graubard
Verna Cameron
Carol J. Campbell
Corinne A. Campbell
Kelly J. Campbell
Michael Campbell
Sandy Canepa-Swan
Allison Capen and Mark Iverson
Edward S. Carmick
Ann M. Carnie
Rebecca M. Carr
Nancy Chapman
Heidi Charleson
Robert and Patricia Charlson
Lloyd Chase
Eric and Linda Chauvin, Blackpool Studio
Ann Cheng
Jennifer Chermoshnyok
Michael D. and Gretchen Chesley
Jeffrey Chrisope and Rachel Robinson
Robert Christensen
Terry and Doris Christian
Vernita Christianson
Elaine L. Chuang
George A. Chuckrow
Jason Chukas
Andrew Clapham
Rebecca and Gary Clark
Robert and Amanda Clark
Sterling and Sandra Clarren
Jane Commet
Catherine Conolly and Rodney L. Brown
Colin M. and Johanna Coolbaugh
Robert and Ernestine Coombs
Jeff Coopersmith
David Coors
Roann Corbisier
Candyce B. Cottier
Anthony Cox
Glenna and Tony Cox
Terry H. Coyne
Geoffrey S. Cram
Caroline and William Crenshaw
Linda Croft
Tom and Suellen Cunningham
Melanie Curtice and Jill Mehner

D
Christopher and Stephanie Daley-Watson
Kristen S. Daniels
Johannes H. and Martha Dankers
Steve and Jeanette Dassel
Tatiana D. Davidson
David R. and Jane Davis
Henrietta and Aubrey Davis
Jeffery and Barbara Davis
Jennifer Davis
Tom Davis
Patricia Dawson
Leigh Dean
Christine Deavel* and John W. Marshall
Robert T. Degavre
Paul and Jean Degroot
Elizabeth Deleeuw
Jeremy P. Deleon and Amy L. Weir

Thomas Delrue
Jody Deming
Dennis and Deborah Deyoung
Christopher Dietz
Suzanne Dilanzo
Jerrod Mark Dion
A. Corinne Dixon
Yancy H. Dominick
Beau L. Donaho
Catherine M. Donaldson
Nelson G. Dong* and Diane Wong
Paul V. Donlan
Joanne Donohue
Philip T. Doughten and Kenneth C. La
Jonathan and Paula Drachman
Judy T. Drake
Richard and Martha Draves
Sascha Dublin and Mikael Kvart
Julie K. Duckworth
Grace Dumenil
Bruce C. Duncan
Diana Dundore
Ruth S. Dunlop
George J. Dunn, Jr.
Phillip Dunn
Mary Dunnam

E
Karin E. Ebert
James T. Eckman
Daniel Ederer and Takayo Minakami
George O. Edwards
Sally S. Edwards
Mark H. Tracey Eisenberg
William and Anita Elder
Charles Eliot
Jane C. Ellis
Sandra and Earl Emerson
Edith and Klaus Engel
Candace and Loren Engrav
John Ephron and Joan Olson
Daniel Eshner
Landon Estep
Bob Evans and Stephen Davis
Dale and Sharon Evans

F
John J. Farbarik
Jim Farrish
Jane Fellner
Paul and Lyn Fenton
Ellen L. Ferguson
Andre Feriante
Sharon A. Feucht
Melanie Field and Vinaya Chepuri
Matthew Fingerhut
Bif Fink
Molly L. Fischer and Paul A. Flyer
Stanley W. Fitzpatrick
Timothy Fitzpatrick
Rose and James Flaherty
Brett Flegg
Beverly and Paul Fletcher
Robert L. and Betty Fletcher
Ruth M. Flucke
Peggy Fogliano
Anne and Jack Fontaine
Charles Forge
John L. Foy
Esme Freedman

Eleanor Freeman
Kristen French and Nick Radovich
Helen and Paul Frenzen
Kirsten and Rick Friedman
Mari Friend
Bryan D. Fullerton
Gary and Melissa Fulton

G
Diana Gale and Jerry Hillis
Ulrich and Ethel Ganz
Gwenn A. Garden
Jacqueline S. Gardner
Allison Garr
Loris H. Garratt
Charles D. Garrett
Philip L. Garrett
Todd Garvin and Dianne Garvin
Carolyn B. Gaylord
Mary E. and Fred D. Gentry
Alberta George
Harry and Deborah George
Gabrielle and Olivia Gerhard
Genevra Gerhart
Catherine J. Gibson
Michael P. and Sara Giesler
Mark J. Gilbert
Steven G. Gilbert and Janice Camp
Kenneth Gladden
Noah Glassberg
Stephen and Kathleen Gleaves
Laurie Gogic
Peggy L. Golberg
Hellmut and Marcy Golde
James and Louise Gordon
Laura Gordon
Stone Gossard
Laura Kennedy Gould
Stephen A. Grace
Scott D. Graczyk
Dean Granholm
Anne Green
Michael R. Green
Thomas Green
Frank Greer and Stephanie Solien
Ken Gresset
Bob and Barbara Griffith
Richard Gross
Terry and Barbara Grove

H
Linda B. Haas
Richard and K. Diane Haelsig
Joseph and Lisa Hagar
Patricia A. Haggerty
Carroll Haining
Cecilia A. Hall
Kathy J. Hall
Lance Halley
Sydney Hammerquist
Tim Hannon and Jennifer Weber
Bjorn and Suzanne Hansen
Sig T. Hansen, M.D.
Lawrence and Hylton Hard
Benson and Pamela Harer
Denise and J W Harris
Robert S. Harrison
Ann M. Hart
Tobias and Jennifer Hartmann
Peter and Diana Hartwell
Linda J. Hartzell and Mark C. Perry
Neil and S. Ann Hawkins
Mark C. Hayes

Elizabeth Hazard
Russ Heaton and Doyle's Public House
Jennifer Heger
Daniel Heitner
Marjorie K. Hemphill
Nancy M. Henderson
Jennifer and Tim Hendrickson
William V. Henningsgaard
James Herndon
Michael and Julia Herschensohn
Iris A. Herzfeld
Michael J. Herzfeld
Dale E. Hicklin and Jean Moran
James Higham
David Higley and Shannon Loftis
Charles Hill and Betty Lane
Linda Hill
Michael P. Hilty
Kathleen Hinson, Lt.Col.Ret.
Paul and Donna Hoffman
Joanne Holbrook
Elise M. Holschuh
Wayne E. Holt
Robert & Phyllis Holzworth
Leroy E. and Valerie Hood
Ruth and Bill Hood
Linda Hopfinger
Alexander I. Hopmannand and Kat Korab
Mary P. Horan
Don and Lynda Horowitz
Krista Horstman
Mary Horvitz
Linda Hume
Thomas R. Hundley
Jan and Max Hunt

I
Phoebe Ingraham
Danny L. Inman
Bob and Patti Ireton
Barbara A. Isenhour

J
Shari M. Jackson
Ken Jacobsen
Katrja Jaenicke and Harald Schwarz
Jim Jamieson
Joseph R. Jenkins
David and Becky Johnson
David L. Johnson
Donald R. and Dona Johnson
George T. Johnson
Glenda L. Johnson and David Knoyle
Kaaren Johnson
Sara Jane Johnson
Joshua Jorgensen
Diana and James Judson
Eric Juvet

K
Marsha K. Kabakov
Michael V. Kale
Roger Kammerer
Gregory Kaneida
Harold Kaplan and Caroline Bombar-Kaplan
David and Gail Karges
Mervin Kayser
Eleanor A. Keasey
Matthew C. Keifer
Carol Kelley
Linda A. Kent and James M. Corson

Margaret Kerrigan and Jon Conte
Pamela and Gregory Keyes
Jerry King and Sue Eastman
Mary-Claire King
Richard and Kathleen Kirkendall
Jack and Mary Ann Kirkham
Paul Klingler
Jeff J. Knoll
Beatrice S. Knudsen
Kari Knutson-Bradac
Ruth Koutsky
Glen R. Kriekenbeck and Quentin King
Rhonda Kristoff
Kenneth Krohn
Curtis Kruse
Pranish Kumar
Karl Kuntz and Ann Rushing
Donald S. Kunze
Jin Y. Kwon

L
John F. Lambirth
Steven Landau
Fenton Lane
Suzanne and Jeff Lane
Norman Langseth
Leander Lauffer and Patricia Oquendo
David Lawrence and Carla Tachau Lawrence
Kristen Lawson
Lyn M. Lee
Randy M. Lee and Mari Hoten Lee
John Lefor and Karen Lund
Martha Leigh and Joseph Brady
Monica Leigh
Flora M. and Albert Leisenring
Tom Lennon and Patricia Keegan
Marc A. Lentini
Conway and Carolyn Leovy
Debbie Leung
Nancy Lewars and Mike Lewars
Douglas L. Lewis
Libby Lewis and David Traugott
Edward Liebow and Erin Younger
Greg and Corina Linden
Terry and Shirley Lindquist
John Lindstrom
Jaisri R. Lingappa
Mr. and Mrs. Brian Linnell
Joe and Lauren Linscheid
James E. Litsinger
Eric Liu and Jena Cane
Evan L. Loeffler
Shelley M. Logan and Andrew Moriarty
Sheila A. Lukehart
Phillip and Bernadine Lund
Laura E. Lundgren
Teresa Lutterman
Andrew Lyle

M
Susan R. Mackay
Michael and Wilawan Macleod
Amalia Magaret
L. Kathleen Mahan
David Mahowald and Romy Domingo
Jonathan A. and Leigh Manheim

Carl Manley
Angela Mansfield and
Garret Veley
Ellen and Jon Markman
Kat Marriner and Willie Weir
William G. Marsh
Dan Martin
Richard W. Mathes
Nancy A. Matlock
David Maymudes and
Emily Anthony
Patricia C. McCall
Michelle A. McCarthy
Nathan and Laurie McCoy
Richard B. McCune
Lillian C. McDermott
Jason and Saira McDonald
Jeffrey J. and
Karen M. McHenry
Scott T and Shelley A McIntyre
Lisa M. McKeirnan
Laurie I. McMillan
Ruth McNally
Lisa A. McPeak
Donald and Sandra McVay
Alan and Bonnie Mearns
Libby Meren
Cindy A. Micleu
John Midgley
Linda Mihalov and Ron Hanlon
Annie F. Miksch
Barbara A. Miller
Matthew Miller
Roger and Edith Miller
Tim Miller
Gregg Miskelly
Kathleen Mitchell and
Scott Landis
Paul Mitchell
Won Moc
Donald K. Mooers
Terry Moore and
Cornelia Moore
Doug Morgan
Barbara G. Morgridge
Laura and Loren Mork
Jean M. Morris
Christian M. Moulin
Mike E. Mowat and
Janet Runbeck
James and Susan Muhm
Mary Lou Mulflur
Donna K. Murphy
Sharon Murphy

N
Marcia and Jerald Nagae
Michael Narayan
Lorraine Nay
Dorothy Neville
Marcia Newlands
Roger and Kulli Newton
Dean and Carla Nichols
Connie Niva
Theresa Nix and
Lucas Van Ginneken
Ed Noble
Craig A. Norsen
Barbara A. Nuckley

O
James O'Brien
Gillian O'Connell
Paul Ohnemus
Vernon and Martha Olsen,
Shifty Sailors
Tom and Carol Olson

Timothy E. Onders
Leann Onishi
Rosemary J. Orr
Laura and Peter Orser
Jeanne B. Ostrander
Henry Outzen and Lori Morgan
Dan and Gloria Overgaard
Robert Owen and
Ruth Emerson
Kristopher J. Owens

P
Helen K. and Douglas S. Paauw
Alison Paisley
Ralph and Marlys Palumbo
Vasileios Papadimos
Rohinee Paranjypte
Susan Parazzoli
Dave and Katherine Parish
Ann Parker-Way and Paul Way
Upshur Parks
Susan Payne and
Benjamin Porter
John V. Pearson
Russell and Lois Ann Pearson
Gloria B. Peck
Cairn Pedersen
Liza A. Perpuse
Mina Person
Allan F. Persyn
Hans H. Peters
Diana Peterson and
Joseph Limacher
Matthew Peterson
Mitch and Jennifer Peterson
Joseph R. Phelan
Hugh and Joan Phillips
David Phinney
Dana Pigott
Judy Pigott
James Pinkerton
Ronite and Colin Plank
Donald Poggi and Shirley Poggi
Donald D. Pogoloff
Joshua and Kate Pollock
Laurie Porter
Jennifer J. Pratt
Julie and Chris Prentice
Terry Price
Kirk and Judy Prindle
Margaret B. Provenzano
Rona R. Pryor
Kyle L. Putnam

Q
Tim Quagliaroli and Sheri Hill
Bernice and Warren Quinn
Dana and Nancy Quitslund

R
W. Foster and
Lemoine Radford
Douglass A. and Katherine Raff
Candace H. and
Robert R. Rankin
Steve Raymond and
Krisztina Kurunsi
Tom and Sally Reeve
Pat Reh and Tom Slattery
Jay M. and Jane Reich
Robert P. Reichel
Nick and Libby Reid
James Reinmiller
Katherine and Scott Renschler
Bryan Reynolds
Peter and Linda Rhines
Margaret Richardson

Peter Richardson
Jonathan and
Christina Ridgeway
Alyson P. Rieke
Anthony and
Julie Riely-Gibbons
Laura D. Rivendell
Rachel and David Robert
Matthew Roberts
M.L. Robertson
Tom and Christine Robertson
John Rochford and
Nick Utzinger
Christopher and Heidi Rogers
George Rolfe and Lois Duncan
Kelly D. Ronan
Joseph Rood and
Doug Rybacki
Dale A. Roper
Dilys Rosales
Nicole and Joe Ross
Nick, Lynn, George and
Lizzy Rossouw
Steve Rovig
Cyrus Rubin and Grace Rubin
Randy Rumley
Daveda Russell
Ken and Dina Russell
Madalyn and Samir Rustagi
Patricia R. Ryan

S
Hilke Saber
Elliot M. Sacks
Dana A. Samples
Sara Sandford
Pakka and Sarah Sappington
Ingrid Sarapu and
Michael Anderson
Susan and Helmut Sassenfeld
Carla D. Saulter
Leslie A. Savage
Christine M. Sayers
Jennevieve Schlemmer and
Trevor Redfern
Corey Schlosser-Hall
Arthur A. Schmidt
Wes Schreiber
Christopher and Aleta Schuelke
Gary R. Schuldt
Susan Schulman
Sarah Schuyler
Laligam Sekhar
Brian Selby
Keith D. and Lynnette Senzel
Suzanne Shafer
Barbara Shane and
Michael Cox
Dennis W. Shaw and
Julie E. Howe
David B. Shema
Alan and Susan Sherbrooke
G.E. and L.M. Shultz
Seth L. Siegal
Marya J. Silvernale
Richard Simkins
Alex A. Simons
John E. Sims and
Patricia Espedal
Jack Singer and Tia Higano
Charles P. Sitkin
Murali Sivarajan
Paula and John Skartland
Don Slack
Allen and Sara Smith
Brad Smith and
Kathy Surace-Smith

Curtis D. Smith
Michael Smith
Veronica Smith* and
Natalie Hamrick
Zachary Smith
Donald and Lilyan Snow
Daniel R. Snyder
Turgan Somer
Janice J. Sorensen
Richard Sorensen
Mike and Diane Soules
Steve and Cindy Spence
Ray and Lael Spencer
Jay D. Sprenger
Elaine T. Springer
Randy and Sandra Spurlock
Ben Steele and Melinda Iwen
Elsa B. Steele
Heidi J. Steen
Daniel Steinberg
Patricia A. Stensel
Judy H. Sterry
Jeremy J. Stewart
Babette T. Stewart
Tom Stthay
Sean Stitham and Jean Mahan
Jennifer Stitzel
Sara E. Stoppels
Richard M. Strickland
Pamela D. Stromberg
Werner Stuetzle
David Stutz and Beth Glisten
Maggie I. Sullivan
Susan and Patrick Sullivan
Greg Sundberg and Syd Phillips
Veronica Sutherland
Ellyn W. Swanson
Mark C. Swatzell
Marietta A. Szubski

T
Darren S. Tanner
Henry and Linda Tanz
Gael and Robert Tarleton
Mary E. Tate-Phillips and
Gary Phillips
Laurel A. Taylor and
Evan Stoner
Connie Templeton
Sallie R. Teutsch
Cynthia Tewes
Richard M. Thayer
Jeff and Melissa Thirloway
Elizabeth Thomas and
Ronald L. Roseman
Eleanor Thompson
Benjamin Tibbals and
Jennifer Benner
Robert J. Tindall
Mr. and Mrs. Frederick
W. Titcomb
Jane Tobin and
Robert Harrington
John and Joan Tornow
William and Ruth True
Sarah Truitt
Christina J. Tucker
Patricia Tylliaa

UV
Winifred and Keith Unterschut
David Valdez*
Doris Van Alen
Venkatesh Veeraraghavan
Mike Veitenhans and
Mary Lee Newman
Theresa Verwey

Kathy Veterane and
Robert Bates
Michelle L. Vician

W
Don and Mary Wacker
Robert and Julie Wagner
Robert and Lisa Wahbe
Catherine Walker and
David Fuqua
Marcia B. Walker
Wendy Wallace
Susan J. S. Walters
Dean Walund
Eugene Wan
Jennifer C. Wang
Donald R. Warren
Jeff Wasierski
Carol Watson
Heidi Rose Watters
Edward L. and Cynthia K. Weber
Justin and Dorothy Weber
Mary Ellen and Jim Weber
Tom Weeks and Deb Oyer
Michael C. Weidemann
Emily C. Weiler and
Andrew Jackson
Harriet Weiss
Joel and Nancy Wessenberg
Judith A. Whetzel
Amber Whiple and Steve Kaiser
Gregory White
Mary and Ron White
Barbara B. Whorton
Michelle L. Wilkinson
Tonia Willekes
Ethel Williams
Janet and Fred Williams
Susan and Brian Williams
Sherry Willis
CiCi Wilson
Faithy M. Wilson
Gail F. Wilson and
William R. Patterson
Kathleen B. Wilson and
Randy Sibley
Nancy Winder and
Larry Howard
Mike and Nancy Windus
Fredrik and Sue Winsnes
Joseph G. Winston
Dawn Winters and
Peter Grimm
Marlene and Thomas Wissler
Charlotte Wollheim
Frank Woodruff* and Jan Agosti
Barbara Schuchart Wright and
Charles Bagley Wright, III
Jill A. Wright
Jenny and Scott Wyatt

Y
Mayumi Yagi and Peter Baum
Meredith R. Yasui
Neva J. Yorkston
Edward Young and
Candis Litsey
Elton T. Young
Jim and Leslie Young
Rhonda Younker

Z
Jan Zemplenyi, M.D.
Christian and Joyce Zobel
Ellen and Robi Zocher
Lucy and Thomas Zuccotti

FOUNDATION + ORGANIZATION SUPPORT

Our thanks to the following foundations and organizations for their investment in KUOW.

Anonymous (2)
3M Foundation
Abbott Laboratories Fund
Adobe Systems Inc.
Aetna Life and Casualty
Akhtar Badshah
Alcoa Foundation
Allstate
Altria Group Inc.
American Endowment Foundation
American Express Foundation
American Foundation
Ameriprise Financial
Amgen Foundation
Apex Foundation
AT&T Foundation
Attachmate Corporation
Attachmate WRQ Corporation
Avaya Communications
Bainbridge Community Foundation
Bank of America Foundation
Bank of New York Mellon
Becton Dickinson and Company
Bennett Bigelow and Leedom
Bergen County United Way
Bill and Melinda Gates Foundation Matching Gifts
BlackRock
Blanke Foundation
Bluestem Prairie Foundation
Boeing Company
Boeing Company and Richard B. Brokaw
Boeing Employees Credit
Bola Corporation
Boston Foundation
BP Fabric of America Fund
BP Foundation, Inc.
Brainerd Foundation
Bullitt Foundation
Burlington Northern Foundation
Cadence Design System
Calvert Foundation
Canonicus Fund
Cape Flattery Foundation
Cardinal Health Foundation
Chevron
Choice Hotels International
Christensen O'Connor
Christopher Clark
Chubb and Son Inc.
Citi Global Impact Funding Trust, Inc.
Citrix Systems, Inc.
Coca-Cola Company
Community Foundation of New Jersey
Corbis Corporation
Cornerstone Advisors
Costco Wholesale
Darigold
Delta Dental
Delta Western Inc.

Dorsey and Whitney Foundation
Eli Lilly and Company Foundation
Elizabeth Bouchelle
Employees of City of Seattle
Ericsson Inc.
Expedia, Inc.
ExxonMobil Foundation Inc.
FactsFinder.com
Fidelity Investments Charitable Fund
Fiduciary Trust Company
First Data Corporation
FM Global Foundation
Ford Foundation
Foundation Source
Gap Foundation
General Electric Company
General Mills Foundation
Getty Images Seattle
GlaxoSmithKline Foundation
Global Energy Concepts
Global Impact
Goldman Sachs Philanthropy Fund
GoodSearch
Google
Hewlett Packard Matching Gift Program
Hill's Pet Nutrition Inc.
Honeywell International Foundation
Hornall Anderson and Matching Gifts
IBM Corporation
Independent Charities of America
Jacobson Jarvis and Company
Jewish Comm Foundation of Greater King County
Jewish Communal Fund
Johnson and Johnson
JPMorgan Chase Bank WAMU Corporate Giving
JPMorgan Chase
JustGive.org
Kaplan Inc.
Key Foundation
Kimberly-Clark Foundation
King County
Laird Norton Tyee Trust Company
LandAmerica & Financial Group, Inc.
Landau Associates Inc.
LexisNexis
Los Arboles Management, LLC
Lucky Seven Foundation
Luke 12:48 Foundation
Macy's Foundation
Matthew G. Norton Company
McCaw Family Foundation
McGraw-Hill Fdtn Inc.
McKinstry Company
Merck Company Foundation
Microsoft Corporate Gift Match
Morningside Foundation
Kongsgaard-Goldman Foundation
MSNBC.com
MTG Management Consultant
National Semiconductor
NetworkforGood.org
Nintendo of America, Inc.
Olympic Associates Company

Oracle Corporation
PACCAR Foundation
Pacific Coast Feather Company
Pepsi Bottling Group
Pescamax Inc.
Pitney Bowes Inc.
Plum Creek Foundation
PopCap Games Inc.
Popmultimedia
ProQuest
Prudential Foundation
Puget Sound Energy Corporation
Puget Sound Energy Foundation
Quaker Hill Foundation
Qualcomm
RealNetworks Foundation
REI
Rick Steves' Europe
Riley & Nancy Pleas Foundation
Rockwell Collins
Russell Matching Gifts
Safeco #2 & Matching Gift Program
Sage Foundation
Saint-Gobain Corporation Foundation
Saltchuk Resources, Inc.
San Juan Island Foundation
SAP
Sarah E. Mackaman and Adrian Magnuson
Satori Software
Schwab Fund and LesLee Burnett
Sill Family Foundation
Silver Creek Capital
Sound Physical Therapy
Sprint Foundation
Stafford Frey Cooper
Starbucks Coffee
Starfish Foundation
Strom Group
Sun Microsystems Foundation
Symetra
T. Rowe Price
Takeda Pharmaceuticals
Tektronix Foundation
The Greater Tacoma Foundation
The Home Depot Foundation
The Leslie Fund, Inc.
The Little Family Foundation
The Manziello Family Foundation
The Pride Foundation
The Seattle Foundation
The William Penn Foundation
Thomson Reuters North American Legal
Thunderbird Pacific Corporation
Trust Account and CARS
Tyco
UBS Foundation
United Way of King County
United Way of Pierce County
United Way of Snohomish County
UPS Foundation
US Bancorp Foundation
US Charitable Gift Trust
Vanguard Charitable Endowment
Verizon Foundation
Wachovia Foundation

Washington Women's Foundation
Watermark Estate Management
Whatcom Community Foundation
William H. Gates, III
Williams Companies Foundation
ZymoGenetics

UNDERWRITING SUPPORT

KUOW gratefully recognizes the following businesses and organizations that have supported the station through underwriting in fiscal year 2009.

12th Church of Christ, Scientist
20th Century Fox
5th Avenue Theatre
ACT Theatre
ADHOST
AEG Live
AFS USA
Ahimsa Dog Training
Air France
Alaska USA Federal Credit Union
Alaska Wilderness League
All Wheel Drive Auto
Alliance for Education
Alliance Francaise de Seattle
Allstate Insurance / Allstate Green
Alzheimer's Association
AmazonFresh
AMC
AMEC Geomatrix
American College of Nurse Midwives
American Society for Training and Development
Amgen
Andre Feriante
Antioch University, Seattle
Arnie Sawyer Films
Art of Living Foundation
Arts at Saint Mark's
Associates Cultural Exchange
Atmosphere Indoor
Backyard Wildlife Fair
Bainbridge Graduate Institute
Ballard Chamber of Commerce
Ballet Northwest
Bamboo Hardwoods
Bantam Dell Publishing
BECU
Bedrock Industries
Bedrooms & More
Bellevue Arts Museum
Bellevue College
Bellevue Philharmonic
Bellingham Festival of Music
Bellingham Technical College
Belt Collins
Bennett Homes
Bertschi School
Betts Patterson & Mines PS
Billings Middle School

Blink Interactive
Bob Byers Volvo
Brentwood College School
Broadway Across America
Broadway Center for the Performing Arts
Buena Vista
Burke Museum
Bush School, The
Carol.com
Cascadia Center / Discovery Institute
Cedar Grove Composting
Center for Spiritual Living
Centrum
CFA Society of Seattle
Chestnut Hill Academy
Chimpanzee Human Communications Institute
Chow Foods
City of Everett
City of Seattle Department of Planning and Development
City University of Seattle
Clam Cannery Project
Clearpath International
Climate Solutions
Collings Foundation
Comcast
Community Transit
Congruent
Conner Remodeling & Design
Cornell University, The Johnson School
Cornish College of the Arts
Country Village
Cowan, Miller & Lederman
Crisis Clinic
Custom Pure
Dairy Farmers of Washington
Daisywagen
Davis Wright Tremaine LLP
Discovery Channel
DK Publishing
Dorsey & Whitney LLP
Doug Fox Travel
Dunn Lumber Co.
Dynamy
Earth Justice
Eastside Arts Coalition
Eastside Preparatory School
Ecohaus, Inc.
Edible Seattle
Edmonds Community College
Elizabeth Holmes Travel
Elliott Bay Book Company
Embry-Riddle Aeronautical University
EMS Marine Coatings and Service
Epiphany School
Epson
Evergreen Healthcare
Evergreen School, The
Evergreen State College
Experience Music Project | Science Fiction Museum
Facère Jewelry Art Gallery
Far East Handicrafts
FareStart
Fat City German Car
Fear of Flying Clinic
Fenwick & West LLP
Festival Network
Field's End Annual Writers Conference

Fireworks Galleries	Lending Club	Plant Amnesty	Seattle Sustain / Sage Environ	Valley Medical Center
First Church of Christ Scientist, Gig Harbor	Levy von Beck & Associates PS	Polyclinic	Seattle Symphony	Via Radiology
First Church of Christ Scientist, Seattle	Listening Mothers	Port of Everett	Seattle Theatre Group	Victoria Clipper
First Tech Credit Union	Live Nation Northwest	Port of Seattle	Seattle Tilth	Walker's Renton Subaru
Fischer Plumbing	Macha Monkey Productions	Pratt Fine Arts Center	Seattle University Albers School of Business	Ward's Cove
Floating Bridge Press	Madison Market	PRC Providence Everett Medical Center	Seattle University Center for Leadership	Washington Credit Union League
Forest Ridge School of the Sacred Heart	Marler Clark	Program on Climate Change	Seattle University College of Arts & Sciences	Washington Dental Service Foundation
Forum on Science Ethics and Policy	Martinelli's	Prosthetics Outreach Foundation	Seattle University College of Education	Washington Energy Services
Foster Pepper PLLC	Massage Sanctuary	Provail	Seattle University School of Theology & Ministry	Washington Home Care Quality Authority
Fox TV	McKinstry Foundation	Pt. Townsend Main Street	Seward Park Reforesting Project	Washington Public Campaigns
Fran's Chocolates	Mercer Publishing	Puget Sound Association of Legal Administrators	Shoreline Community College	Washington State Association for Justice
Fred Hutchinson Cancer Research Center	Mercy Corps	Puget Sound Blood Center	Signature Landscape	Washington State Department of Agriculture
Freiheit & Ho Architects, Inc. PS	Merriman	Puget Sound Energy Green Power Program	Simon & Schuster	Washington State Department of Energy
Friends of the Cedar River Watershed	Methow Valley Lodging Association	Puget Sound Osteoporosis Center	Simply Seattle	Washington State Department of Information Services
Gage Academy of Art	Michael Gross	Ragen & Associates	Sleeping Lady	Washington State Department of Revenue
Gavi Fund	Mikkelborg Broz Wells & Fryer PLLC	Random House	SME Electrical Contractors	Washington State Potato Commission
Gilbert and Sullivan Society	Milliman	Rath Law	Snohomish County Airport / Paine Field	Washington State University
Global Impact	Minor & James Medical	Ravenna Third Place Books	Soaring Heart Futon	Washington Women In Trades Watchguard
Global Washington	Miramax	Ray's Catering	Sound Transit	Waterbrook Wines
Gold Class Cinemas	momslikeme.com	Redwood Palms Pictures	St. Thomas School	West Coast Live
Good Belly	Mountaineers Books	REI	Sterling Savings Bank	Westside School
Gordon Tilden Thomas & Cordell LLP	Mountains to Sound Greenway Trust	Rejuvenation	Stewardship Partners	Whatcom Artists Studio Tour
GoToMeeting.com	Mrs. Cooks	Riddell Williams PS	Story Island Entertainment	Whitefish Mountain Resort
Grameen Foundation	Municipal League of King County	RiverCity Blue Grass Festival	Subaru America	Wide World Books & Maps
Greater University Chamber of Commerce	Museum of Flight	Robert Half International	Sunseed Farm	Wildland Adventures
Group Health Cooperative	National Multiple Sclerosis Society	Rosario Resort	Suzy Boguss Concerts	Wing Luke Asian Museum
Harbour Pointe Financial Advisors	Native Root Designs	Ryan, Swanson & Cleveland PLLC	Swedish	Wintergrass
Harper Hayes PLLC	Nature Conservancy	Sage and Stone	Swenson Say Faget	Wolf Camp
High Road Automotive	NDTV	San Juan Islands Visitors Bureau	Tacoma Philharmonic	Wolf Haven
Highline Medical Center	New Space Entertainment	Sasquatch Books	Ten Thousand Villages	Women's Therapy Referral Service
Homestreet Bank	Nickel Bros	Scheer & Zehnder LLP	The Funeral Site	Woodland Park Zoo
Honda of Seattle	Nordic Heritage Museum	Schnitzer West	Therapy Search.net	Woods and Associates
Hopelink	Nordstrom	School of Teaching ESL	Third Church of Christ, Scientist	Working Assets
Houghton Mifflin	Norsk Remodeling	Schwabe, Williamson & Wyatt	Third Place Books	Yakima Valley Development Association
Hyperion Books	North Olympic Land Trust	Seaport Air	TMR Associates LLC	YWCA
IBS Treatment Center	Northwest Associated Arts	Seattle Academy of Arts & Sciences	Top Ten Toys	Z' Tejas
In Harmony	Northwest Environmental Education Council	Seattle Aquarium	Travel Montana	
Inhabit, LLC	Northwest Fine Woodworking	Seattle Art Museum	Travel Oregon	
InSpa	Northwest Hospital	Seattle Biomedical Research Institute	Tree House Yoga	
Intention Media	Northwest Yacht Brokers / Boats Afloat	Seattle Boat Show	Tree Solutions, Inc	
International American University	NuMark Office Interiors	Seattle Cancer Care Alliance	True West LLC	
International Brotherhood of Electrical Workers Local 77	Oberlin Conservatory of Music	Seattle Center	UC Berkeley, Haas School of Business	
International Relief and Development	Olympia Lacey Tumwater Visitors and Convention Bureau	Seattle Chamber Music Festival	UMO Ensemble	
Intiman Theatre Company	Olympic Peninsula BirdFest	Seattle Children's	University Book Store	
Izilla Toys	One Reel	Seattle Children's Theatre	UPS Stores	
Jorve Corporation	OneAmerica	Seattle Choral Company	Upwest Arts	
K & L Gates	Overlake Hospital Medical Center	Seattle Condominium Review	US Bank	
KCTS	Overlake School	Seattle Counselors Association	US Federal Housing Administration	
Keeney's Office Plus	Pacific Medical Research Department	Seattle Divorce Services	UW Arts	
Kenmore Air	Pacific Northwest Association of Private Schools	Seattle First Baptist Church	UW Autism Center	
Key Consulting Inc.	Pacific Northwest Ballet	Seattle First United Methodist Church	UW Bothell	
KeyBank	Pacific Northwest National Laboratory	Seattle Foundation, The	UW College of Education	
Kimberly-Clark	Pacific Northwest Writers Association	Seattle Goodwill	UW Dance Program	
King County Housing Repair	Pacific Science Center	Seattle International Children's Festival	UW Department of Comparative Religion	
King County Library System	Pauline	Seattle Neighborhood Farmers Markets	UW Educational Outreach	
King County Water & Land / Envirostars	PCC Natural Markets	Seattle Opera	UW Evans School Public Affairs	
Kirkland Performance Center	Peoples Bank	Seattle Pacific University	UW Extended Degree Program	
La Trienda Folk Art Gallery	Peterson Sullivan, PLLC	Seattle Peace Chorus	UW Foster School of Business	
Lakeside School	Physicians for a National Health Program, WA Chapter	Seattle Polish Film Festival	UW Medicine, Harborview	
Lane Powell PC	Pike Place Market	Seattle Print Fair	UW Mini Medical School	
Law Offices of Richard D. Seward		Seattle PUD	UW World Series— Meany Hall	
Leadership Institute of Seattle		Seattle Repertory Theatre	Uwajimaya	
LeMaster Daniels PLLC				



**KUOW PUGET SOUND
PUBLIC RADIO**

4518 University Way NE
Suite 310
Seattle, WA 98105-4535
206.543.2710
KUOW.org

DESIGN
Quesinberry and Associates, Inc.

PHOTOGRAPHY
Luke Woods

PRINTING
Urban Press

